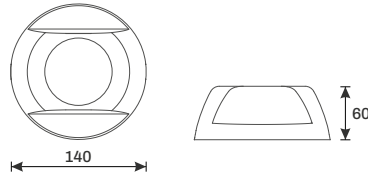
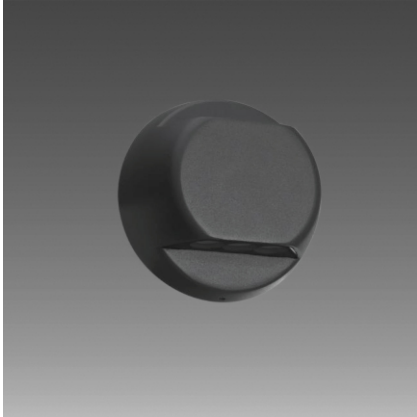


# OAK

## Product & Installation Details



All dimensions are in mm.\*

## Product Details

### System Wattage

7W

### Lumen Output

600lm

### Efficacy

85lm/W

### CCT [K]

2700 / 3000 / 4000 / 6500

### Beam Angle

Asymmetric

### Driver

300mA

## General Specification

### Product Preference

#### Lighting Type

Wallwasher Up/Down

#### Environment

Indoor / Outdoor

#### Installation

Surface Mounting

### Construction & Materials

#### Housing

Die Cast Aluminium

#### Body Finish

Powder Coating - White / Black

### Thermal Management

#### Heat Sink Material

Die Cast Aluminium

#### Cooling Technique

Passive Cooling

### LED Technology

#### LED Life Time @L70/B10

>50000 Hrs.

#### Colour Rendering (CRI)

CRI80 as Standard

### General Features

#### Operating Temperature

0°C-50°C

#### Ingress Protection (IP)

IP54

#### Driver

Integrated

### Electrical System

#### Driven With

Constant Current Driver

#### Input Voltage

220V-240V/50-60Hz

#### Output Voltage

16~27V

### Controls

#### Standard

On / Off

#### Optional

Mains / Analog / Dali / BLE

#### P.F. / THD

>0.8 / ≤15%

### Optical System

#### Beam Direction

Fix

#### Tilt

Fix

#### Swivel

No

## Product Details:

Product Name	CCT	Light Spreading Angle	Finish	Dimming Option
OAK - 7W	CW	Assymetric	Black / White	BLE/DALI/ANALOG
	NW	Assymetric	Black / White	BLE/DALI/ANALOG
	WW	Assymetric	Black / White	BLE/DALI/ANALOG



\*Parameters may differ due to CCT or Driver current variation.

